

# ATU. No 7.

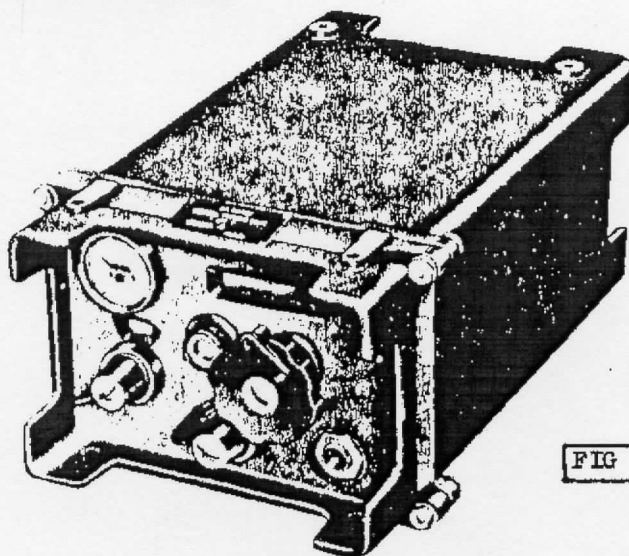
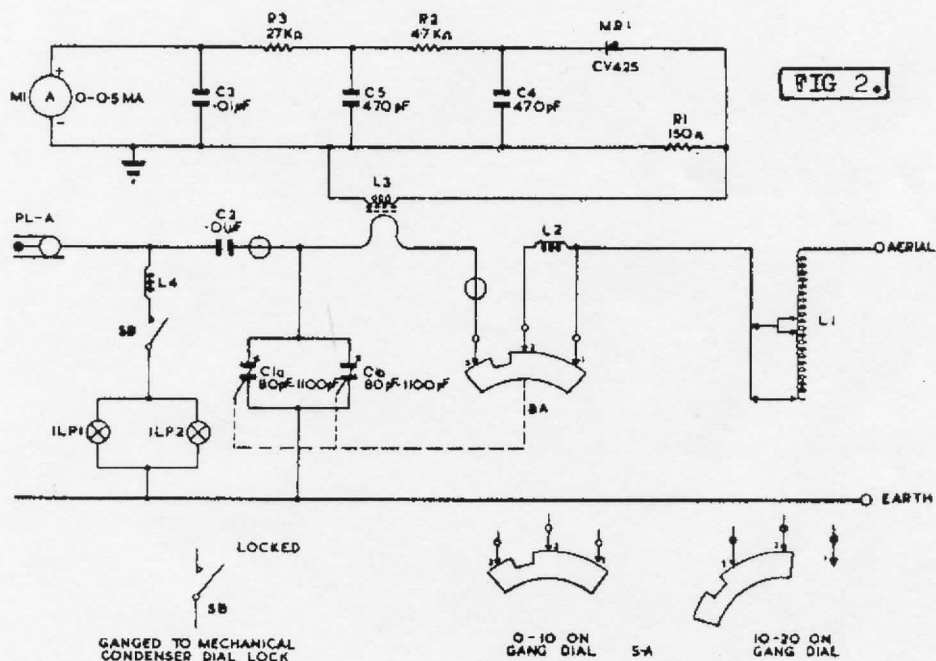
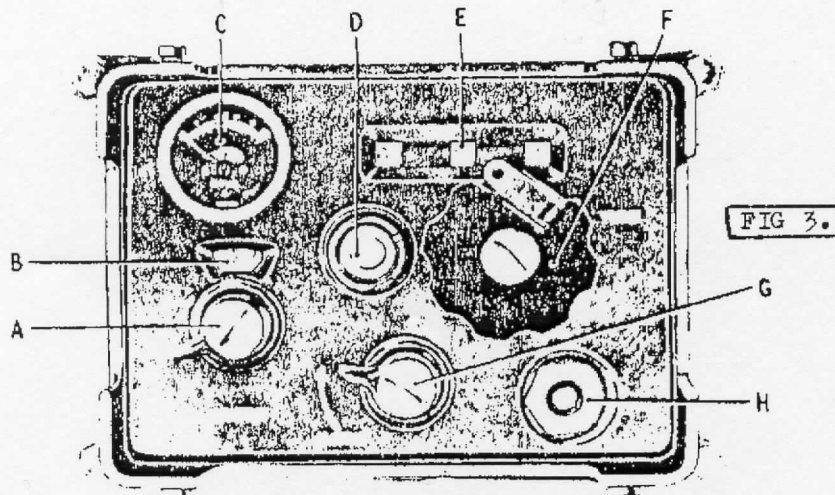


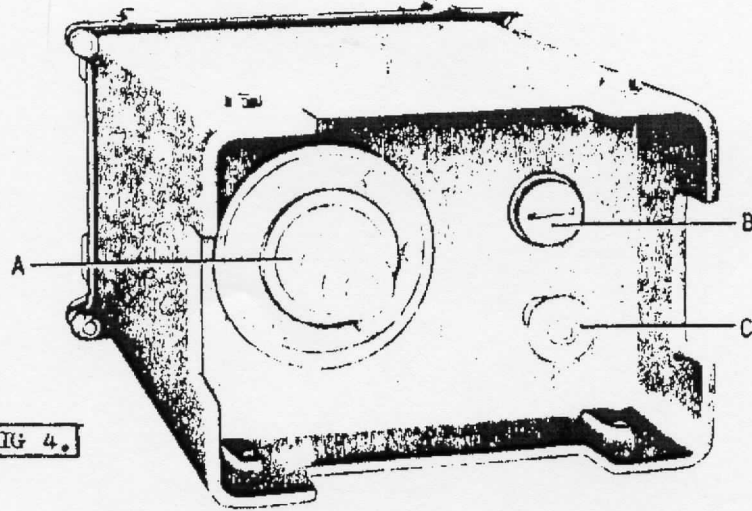
FIG 1.





Aerial tuning unit (front)

Ref.	Control	Description and purpose
A	MATCH (S.A)	Controls matching capacitor C1.
B	Match indicator	Scale used with the MATCH control; calibrated 0-20
C	Meter (M.1)	Indicates aerial current passing out to the aerial when the sender is being operated.
D	Humidity indicator	Gives a visual indication of dampness by changing colour from blue to pink when moisture is present.
E	Tune indicator	A trip counter controlled by the operation of the TUNE control (F). Indicates tuning position on aerial coil.
F	TUNE (L.1)	Rotation of this control moves the sliding contact on the aerial tuning inductor L1, and rotates indicator (E) accordingly.
G	LOCK (S.B)	When in the LOCK position TUNE and MATCH controls are locked, and dial lighting is switched off.
H	Fixed coaxial plug (FL.A)	Plug termination for the coaxial connector between the aerial tuning unit and the sender.



Aerial tuning unit (rear)

Ref.	Control	Description and purpose
A	Aerial terminal	For the aerial lead. When the sender is operating there is a vory high voltage on this terminal.
B	Screwed plug	This plug is removed <u>only</u> when the interior of the unit is being dried out in workshops.
C	Earth terminal	For an earth connector to the set carrier or vehicle chassis.

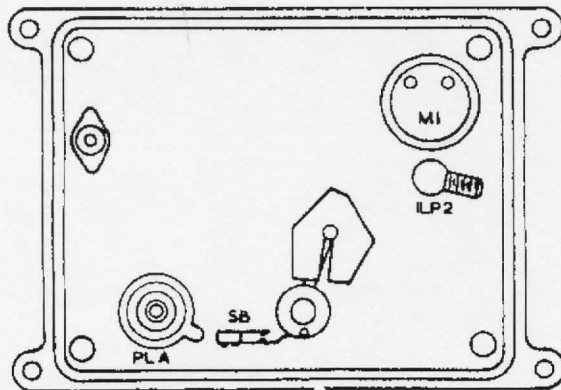


FIG 5.

REAR VIEW OF FRONT PANEL

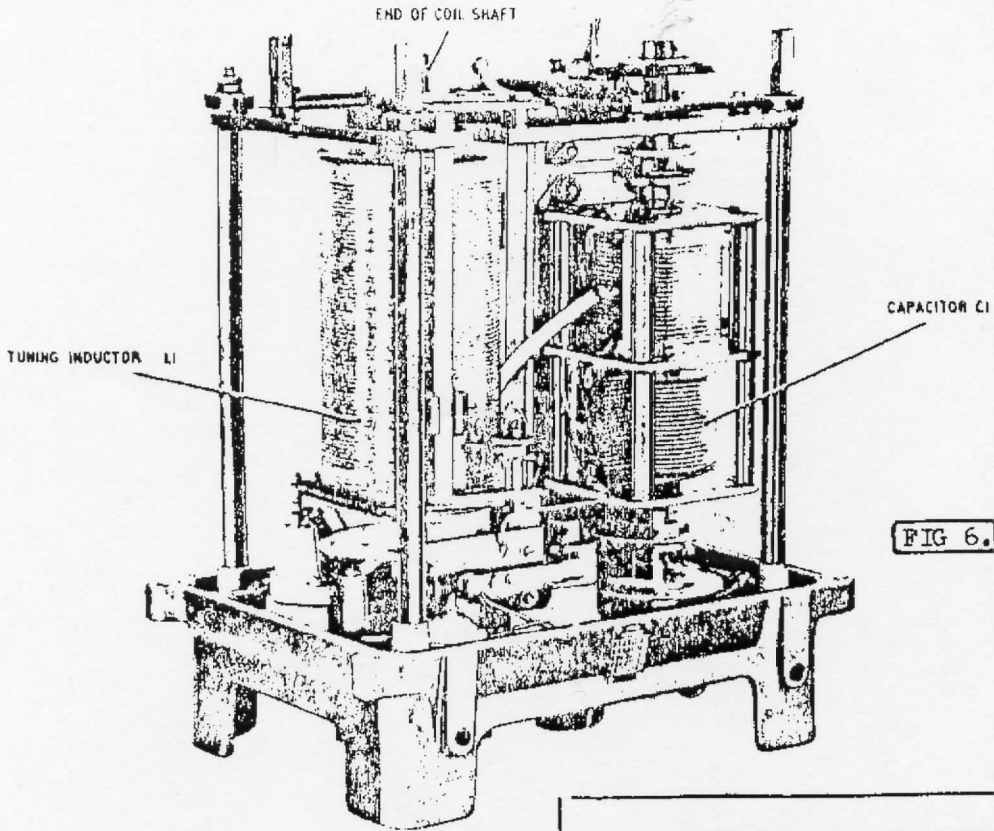


FIG 6.

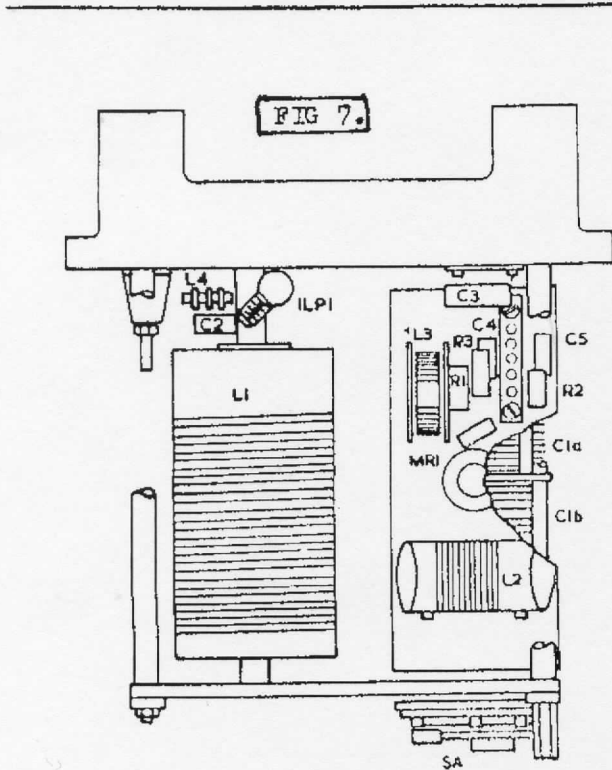


FIG 7.

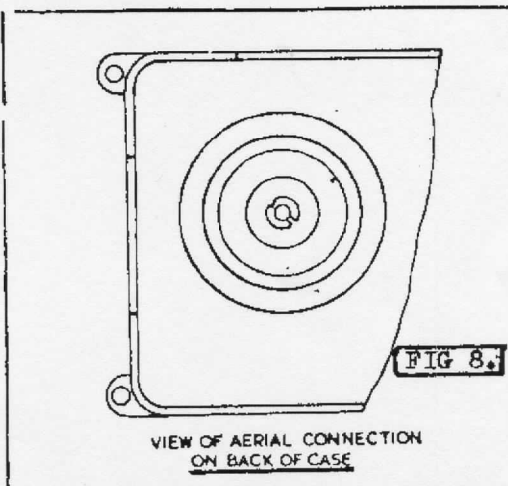


FIG 8.

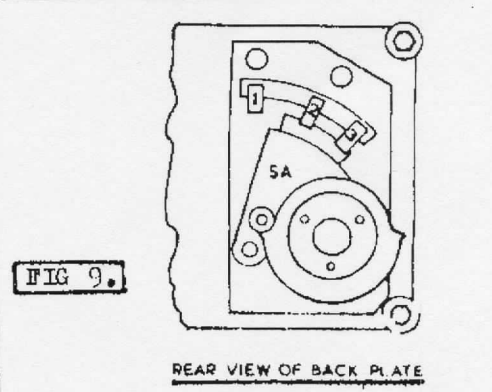


FIG 9.

REAR VIEW OF BACK PLATE